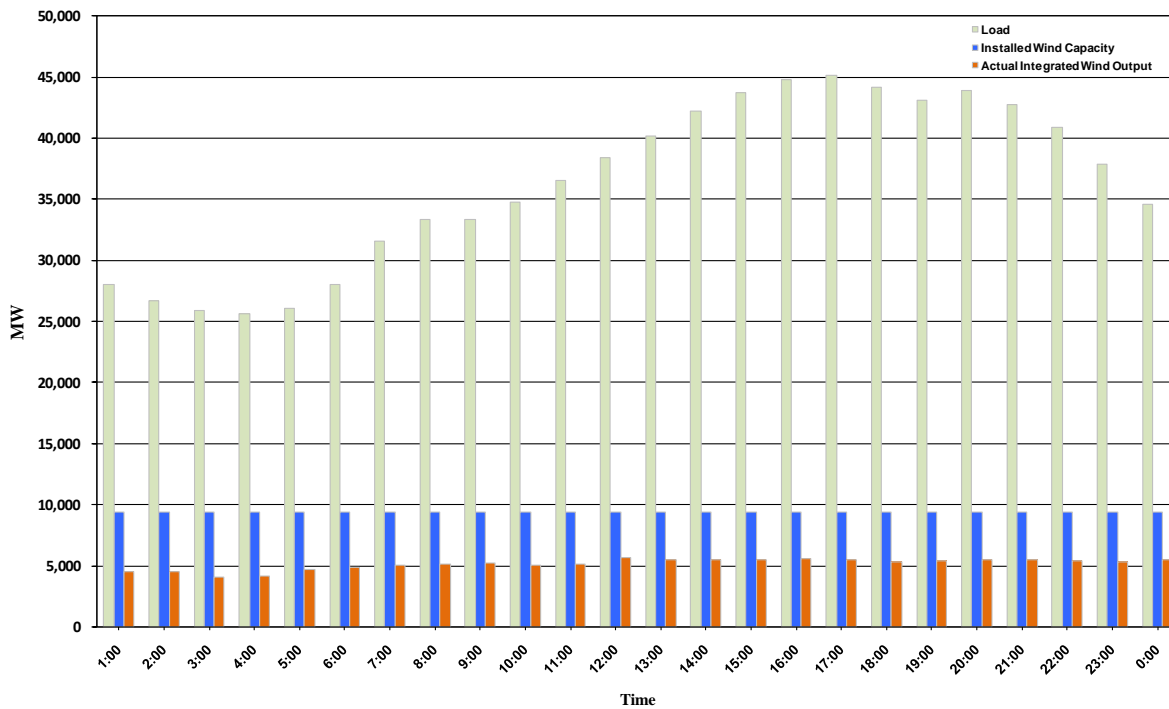




ERCOT Grid Operations Wind Integration Report: 10/25/10

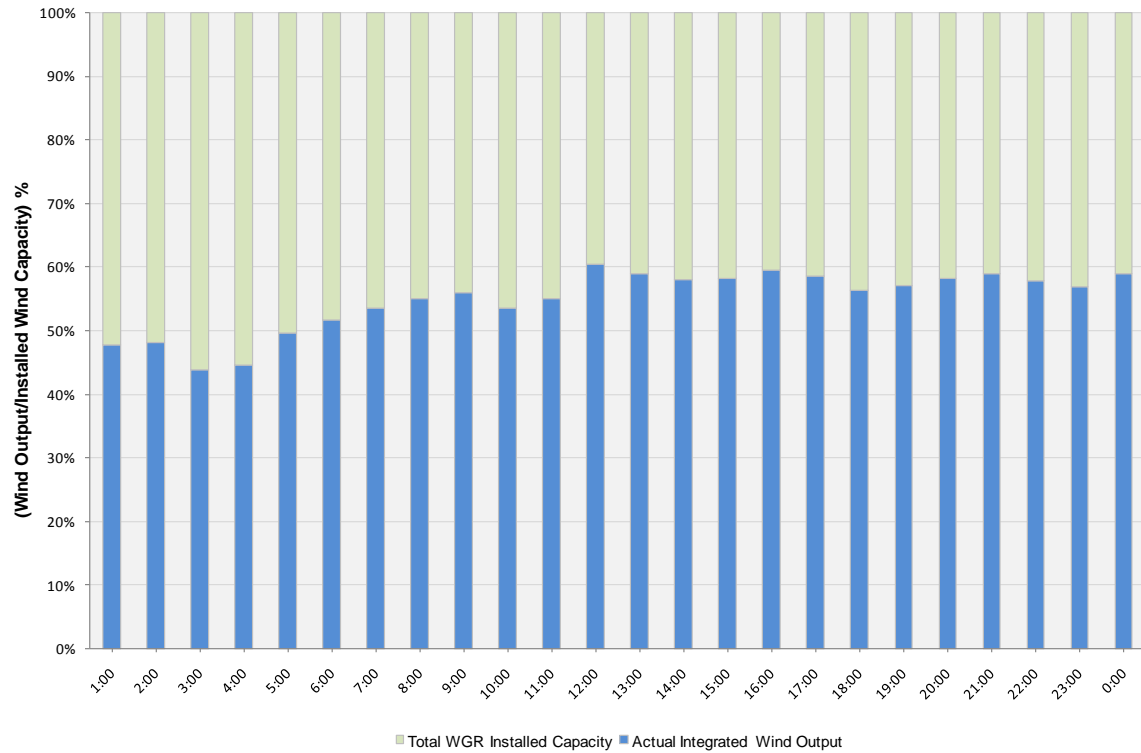
Peak Load	45,107 MW
Load Peak Hour	17
Wind Record 06/12/10	7016 MW
Max Wind value	5949 MW
Wind Peak Hour	23:09:16
Wind Integration %	16.65

Hourly Average Actual Load vs. Actual Wind Output
10-25-2010

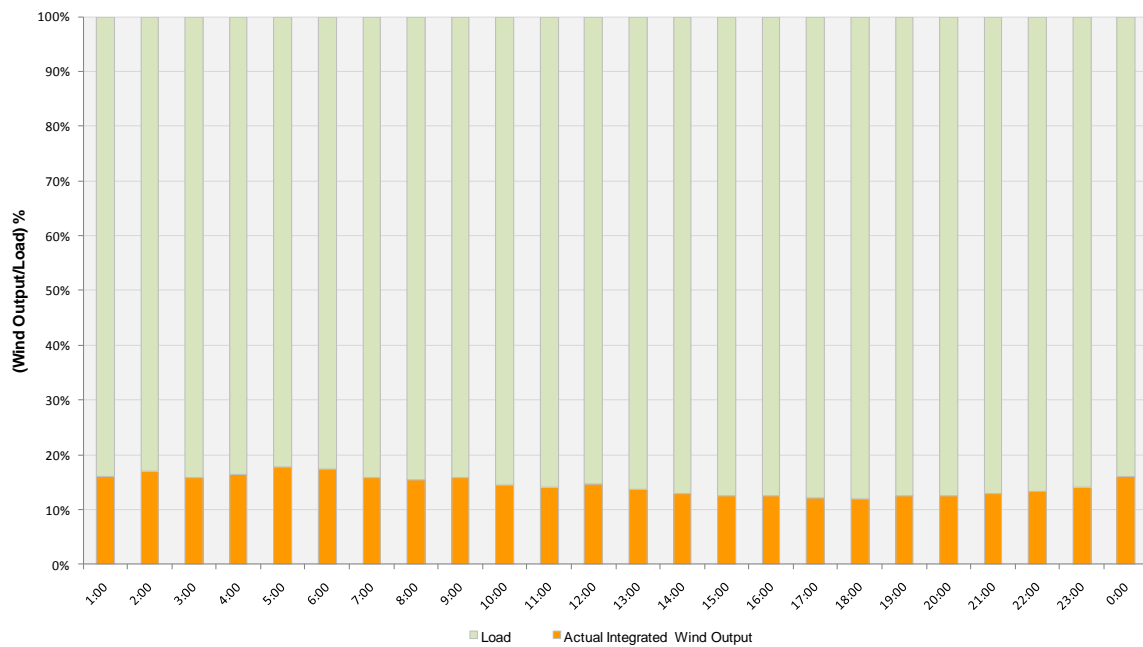




Actual Wind Output as a Percentage of the Total Installed Wind Capacity
10-25-2010



Actual Wind Output as a Percentage of the ERCOT Load
10-25-2010





ERCOT Load vs. Actual Wind Output 10/18/10 - 10/25/10

